

19" Style Optical Distribution Frame

Comacc® offers a product based on 19" Rack practice. The Optical Distribution Frames (ODF's) are designed around the 'Pivoting' Splice Drawer. The unique 'pivoting' drawer arrangement adds a new dimension for control and routing of ruggedised Patchcords.

Cable and Patchcord are installed from either the top or bottom of the ODF, which includes a fast-track Patchcord management system ensuring complete control of all fibres.

The design of the ODF is based on a Modular Backplate system. The current range of backplates consists of the following:-

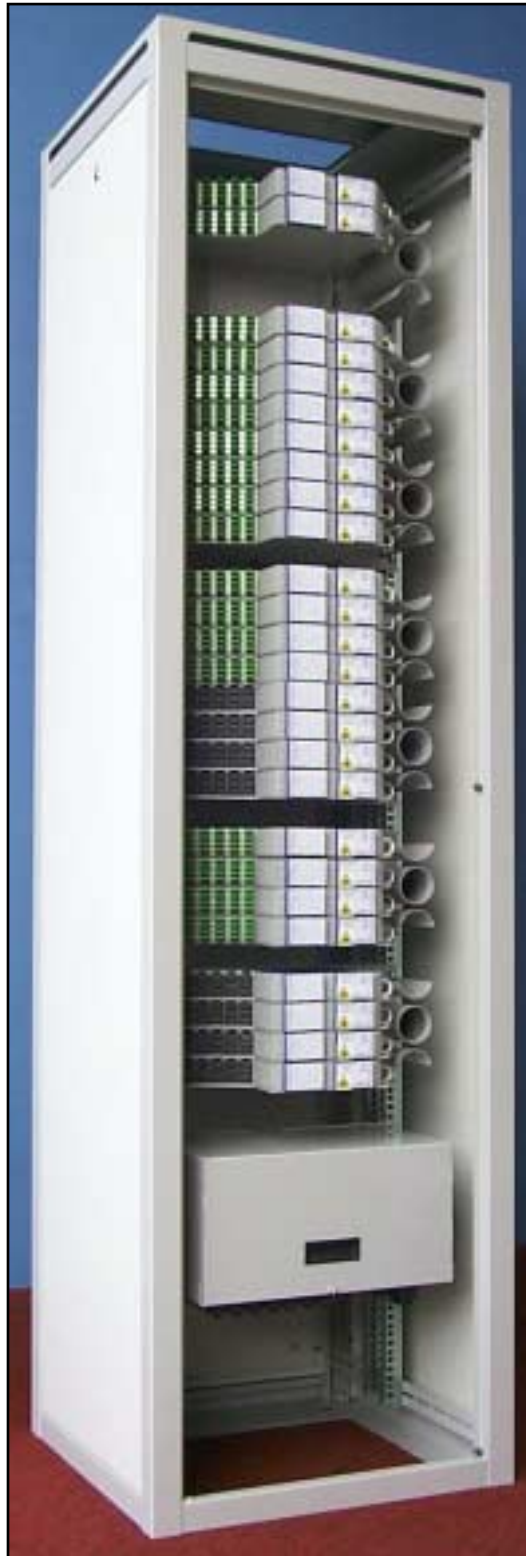
2U Backplate
48 Fibre capacity 2 Drawers (24 Fibres/Drawer) SC-E2000 Connectors.
48 Fibre capacity 4 Drawers (12 Fibres/Drawer) FC/PC-ST, SC-E2000 Connectors.
32 Fibre capacity 2 Drawers (16 Fibres/Drawer) FC/PC-ST Connectors.
4U Backplate
96 Fibre capacity 4 Drawers (24 Fibres/Drawer) SC-2000 Connectors.
96 Fibre capacity 8 Drawers (12 Fibres/Drawer) FC/PC-ST, SC-E2000 Connectors.
64 Fibre capacity 4 Drawers (16 Fibres/Drawer) FC/PC-ST Connectors.
6U Backplate
144 Fibre capacity 6 Drawers (24 Fibres/Drawer) SC-E2000 Connectors.
144 Fibre capacity 12 Drawers (12 Fibres/Drawer) FC/PC-ST, SC-E2000 Connectors.
96 Fibre capacity 6 Drawers (16 Fibres/Drawer) FC/PC-ST Connectors.

Additional Backplate configurations can be designed on request.

The frame utilises a cable Breakout Box at the bottom of the cabinet. External and Customer cables are broken out from here into flexible conduit. The conduit is routed from the Breakout Box through a management system located in the back of the ODF.

The Splice Drawer has been designed to give ease of access and to reduce installation and maintenance time. Splicing can be achieved without removing the drawer from the ODF and patching of the fibres only requires a limited movement of the drawer.

This product is based on a 19" cabinet 600mm wide x 600mm deep. The ODF can be supplied as a 39U, 42U, 45U, or 54U in height. The ODF would normally be fitted with modules mounted with 24 Fibre drawers. These drawers are fitted with SC or E2000 type connectors. Alternatively if FC/PC or ST type connectors are fitted the capacity of the drawer is reduced to 16 fibres.



The Pivoting Splice Drawer and Backplates can be supplied individually (for expansion in existing cabinets) where the mounting rails are mounted mid-cabinet.

19" Style Optical Distribution Frame